

B. Contaminant Inventory Updates

- How often will the contaminant inventory be formally updated through an on-the-ground survey for new potential contaminant sources?

Formal “on-the-ground” surveys of each source water protection area will be conducted **annually**. In addition, formal surveys will be conducted whenever new development (residential or commercial) occurs so that potential contaminant sources are quickly identified and prioritized as to the risk of Emmett’s drinking water system and source water protection areas.

- Who will perform this work?

Mr. Bruce Evans, Superintendent of Public Works for Emmett, Mr. Ron Gearhart, Sewer Operations Manager, & Travis Capson, Water Operations Manager for Emmett, and their designated personnel.

- How will the revised information be incorporated into the source water protection plan?

After each yearly formal survey of each source water protection area, any newly identified potential contaminant source (point or nonpoint) should be added in the “comment section” of DEQ’s online Source Water Assessment program where enhanced inventory information can be added and would be displayed in a separate table in the report. To assist in obtaining accurate locations, point sources will be located using Global Positioning System (GPS).

C. Prioritization of Potential Contaminant Sources

Prioritize the potential contaminant sources identified in the potential contaminant inventory and identify the methodology used to develop the priority list. The susceptibility score may provide information that could help prioritize potential contaminant sources. Potential contaminants may be ranked high, medium, or low based on a number of considerations, including:

- Proximity to the drinking water source
- Detection of known contaminants
- Type and risk of potential contaminant²

Potential contaminant sources have been prioritized. Priority rankings have been assigned to potential contaminant sources using a variable of Low (L), Medium (M) or High (H), based upon a known or perceived threat to the aquifer and Emmett’s source of drinking water.

² Refer to the *Idaho Source Water Protection Guidance* document, “Protecting Drinking Water Sources in Idaho” for additional information in prioritizing contaminant sources.

VI. SOURCE WATER PROTECTION MANAGEMENT TOOLS

Describe the management tools/protection activities that the community will pursue as part of the overall source water protection strategy. Most communities will have several protection activities planned as part of their source water protection strategy.

Please complete a yearly schedule below that:

- Identifies the protection activity
- The date the activity will be completed
- Who is responsible for completing that activity
- The potential contaminants addressed by that activity
- The specific task(s) related to that activity
- Any public component of that activity, if applicable.

If implementation has already begun for any given management tool or protection measure, then this information should be included.

Year 1 2010					
Protection Activity	Date Completed	Responsible Party/Entity	Potential Contaminants Addressed	Specific Task(s)	Public Component
Gem County Source Water Protection ordinance(s).	Begun in early 2010 and ongoing. Hope for public comment	Brad Hawkins-Clark, Anita Hendrix	All sources	Coordinate with county's respective planning, zoning commissions. Pursue development of county-wide source water protection measures.	Yes
Gem County Source Water Protection Overlay District.	component on ordinance in late 2010.	Brad Hawkins-Clark, Anita Hendrix			
Develop brochure summarizing Source Water Protection Plan in layman's terms.	June 2010	Janice Simpson	All sources	Develop brochure. ○ Make available to public (City, County offices; public meetings.) ○ Include with water bill invoicing.	Yes
Provide information on care, maintenance of private wells, waste systems. Target: Pickett	August 2010	Bruce Evans, Scott Taylor	IOC, SOC, Microbials	Obtain materials from DEQ and the Southwest District Health; distribute.	Yes

Protection Activity	Date Completed	Responsible Party/Entity	Potential Contaminants Addressed	Specific Task(s)	Public Component
Year 1 2010					
Corral, homeowner associations in area.					
Post "Source Water Protection Area" signs.	Summer 2010	Bruce Evans, Kim Reed (local Road & Bridge Dept.)	All sources	Obtain signs from DEQ and post at appropriate sites.	Yes
Update City Source Water Protection Ordinance	2010	Brad Hawkins- Clark, Cheryl Conrad	All sources	Review existing ordinance, update as necessary to reflect current and future conditions.	Yes
Year 2 2011					
Develop expanded nitrate testing program for private wells in Emmett NPA. Work with Southwest District Health, existing DEQ program and local high school to implement.	2011	Bill Buttici	IOC (Nitrate)	Obtain DEQ program protocol and coordinate with agencies and local high school administration.	Yes
Provide public education materials on proper use and disposal of fertilizers and pesticides. o Make available to public (City, County offices; public meetings.) o Include with water bill invoicing.	Spring 2011	Janice Simpson	IOCs, SOCs	Obtain materials from DEQ, USDA, other agencies as identified. Distribute to City, County offices, public locations. Include with water billing.	Yes
Seek DEQ grant funding to decommission Wells #1, 4, 5, 7.	Spring 2011	Bruce Evans	All sources	Obtain estimates for well closures; submit in early 2011.	No

Protection Activity	Date Completed	Responsible Party/Entity	Potential Contaminants Addressed	Specific Task(s)	Public Component
Year 2 2011					
Provide information on care, maintenance of private wells, waste systems. Target: South Bench, homeowner associations in area.	May 2011	Bruce Evans, Scott Taylor	IOC, SOC, Microbials	Obtain materials from DEQ and the Southwest District Health; distribute.	Yes
Coordinate with ISDA, Gem County Ag Extension for pesticide drop-off event.	Spring 2011	Bruce Evans, Janice Simpson	IOCs, SOCs	Coordinate with ISDA, Gem County Ag Extension to set event date.	Yes
Review and update all aspects of SWPP including management plan, contaminant source inventory, and contingency plan.	2011	Bruce Evans, all planning team members.	All sources	Set meeting date. Publicize meeting date at City/County offices, public locations.	Yes
Year 3 2012					
Provide information on care, maintenance of private waste systems. Target: Emmett area north of Payette River, homeowner associations in area	May 2012	Bruce Evans, Scott Taylor	IOC, SOC, Microbials	Obtain materials from DEQ, Southwest District Health. Distribute	Yes
Develop expanded nitrate testing program for private wells in Emmett NPA. Work with Southwest District Health, existing DEQ program and local	2012	Bill Buttici	IOC (Nitrate)	Obtain DEQ program protocol and coordinate with agencies and local high school administration.	Yes

Protection Activity	Date Completed	Responsible Party/Entity	Potential Contaminants Addressed	Specific Task(s)	Public Component
Year 3 2012					
high school to implement.					
Review and update all aspects of SWPP Plan including management plan, contaminant source inventory, contingency plan.	May 2012	Bruce Evans, all planning team members.	All sources	Set meeting date. Publicize meeting date at City/County offices, public locations.	Yes
Year 4 2013					
Provide information on care, maintenance of private waste systems. Target: West of Emmett to Tom's Cabin Road and homeowner associations in area.	May 2013	Bruce Evans, Scott Taylor	IOC, SOC, Microbials	Obtain materials from DEQ, Southwest District Health. Distribute	Yes
Develop expanded nitrate testing program for private wells in Emmett NPA. Work with Southwest District Health, existing DEQ program and local schools to implement.	2013	Bill Buttici	Nitrates	Obtain DEQ program protocol and coordinate with agencies and local high school administration.	Yes
Review and update all aspects of SWPP Plan including management plan, contaminant source inventory, contingency plan.	2013	Bruce Evans, all planning team members.	All sources	Set meeting date. Publicize meeting date at City/County offices, public locations.	Yes

Protection Activity	Date Completed	Responsible Party/Entity	Potential Contaminants Addressed	Specific Task(s)	Public Component
Year 5 2014					
Develop expanded nitrate testing program for private wells in Emmett NPA. Work with Southwest District Health, existing DEQ program and local high school to implement.	2014	Bill Buttici	IOC (Nitrate)	Obtain DEQ program protocol and coordinate with agencies and local high school administration.	Yes
Review and update all aspects of SWPP Plan including management plan, contaminant source inventory, contingency plan. Submit to DEQ for recertification.	2014	Bruce Evans, all planning team members.	All sources	Set meeting date. Publicize meeting date at City/County offices, public locations.	Yes

VII. CONTINGENCY PLAN

A. Reference existing contingency plan if available

If a contingency plan or emergency response plan does not exist for your water system, complete a contingency plan for drinking water emergencies and attach to this source water protection plan. The contingency plan must identify:

- Potential emergencies
- Key contact personnel
- Alternate sources of drinking water, if any
- Where copies the contingency plan will be located
- Opportunities for public review

Bruce Evans and his staff completed a Security Vulnerability Assessment (SVA) and an Emergency Response Plan (ERP) in 2002, and updated them in 2007. Both are currently

being reviewed and updated with an expected completion date of August 2010. Copies of the ERP will be located in City Hall and the City Shop. Copies of the ERP will also be provided to city council members and emergency first-responders. Due to matters of security, the SVA is located in a secure place and is not available for public review. Parties interested in the aspects of Emmett's ERP may contact Mr. Bruce Evans, Superintendent of Public Works at (208) 365-9569 or at emmettpublic@qwestoffice.net.

B. Contingency Plan Update

Identify how often the contingency plan will be reviewed and updated (recommend yearly at a minimum).

Emmett's Emergency Response Plan (ERP) will be reviewed and updated on an annual basis.

VIII. NEW DRINKING WATER SOURCES

A. Delineations for New Sources: How will new sources be delineated?

New drinking water sources will be delineated in a manner consistent with the delineation process for existing drinking water sources. If there are major changes to an existing source's construction, discharge rate or pumping rate, then the existing delineation should be reviewed to ensure that it still represents the appropriate source water protection areas. Delineations may be updated or modified if significant new information becomes available. Please contact DEQ for further information if questions arise.

B. Protection Strategies for New Sources

Discuss the potential need for new drinking water sources, taking into account projected population growth, new industry, and other relevant factors. If it appears new sources may be needed, identify potential locations and discuss how likely areas for new drinking water sources will be protected from significant contamination.

The City of Emmett has recently acquired two additional drinking water wells from a commercial development known as the Shadow Butte Industrial Park. These two ground water wells have placed Emmett into a good position for providing drinking water in sufficient amounts to meet its future needs.

IX. PUBLIC PARTICIPATION

This section should include the methods used to involve the public and obtain input during the development of this drinking water source protection plan. This section should also address how future public participation and involvement will be developed.

- Planning team meeting has been advertised using flyers posted at City Hall and at the Public Works office. When the topic of Source Water Protection has been discussed at city council meetings, the topic has been included in the meeting agendas. In addition, meeting notices have been posted in the local newspaper.

X. REFERENCES

The final source water assessment report, if it has been completed, should be referenced here, along with any other important documents or materials. The reference should include information on how the public can obtain copies or otherwise view the material(s).

City of Emmett PWS 3230012 Source Water Assessment Final Report, Idaho Department of Environmental Quality (September, 2000).

City of Emmett Source Water Protection Plan, City of Emmett (2002).

3230078 Shadow Butte Wells Modeling, Idaho Department of Environmental Quality (January, 2010).

APPENDIX A
SOURCE WATER DELINEATIONS

Figure 3. City of Emmett Well #6 Delineation and Potential Contaminant Locations

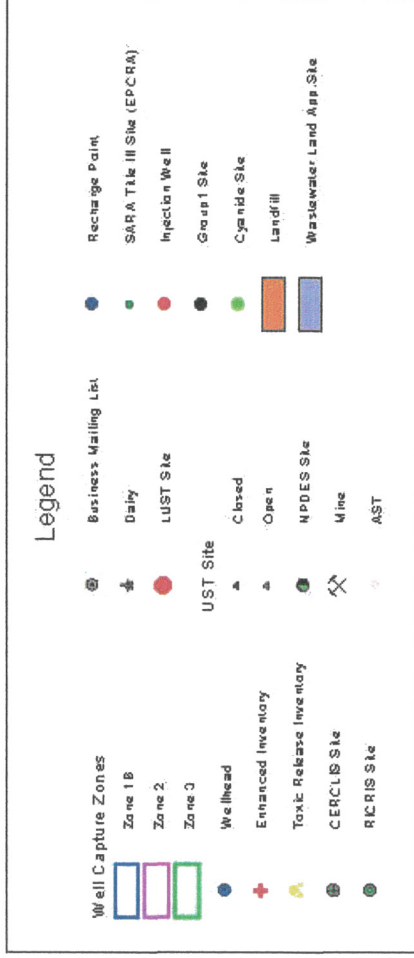
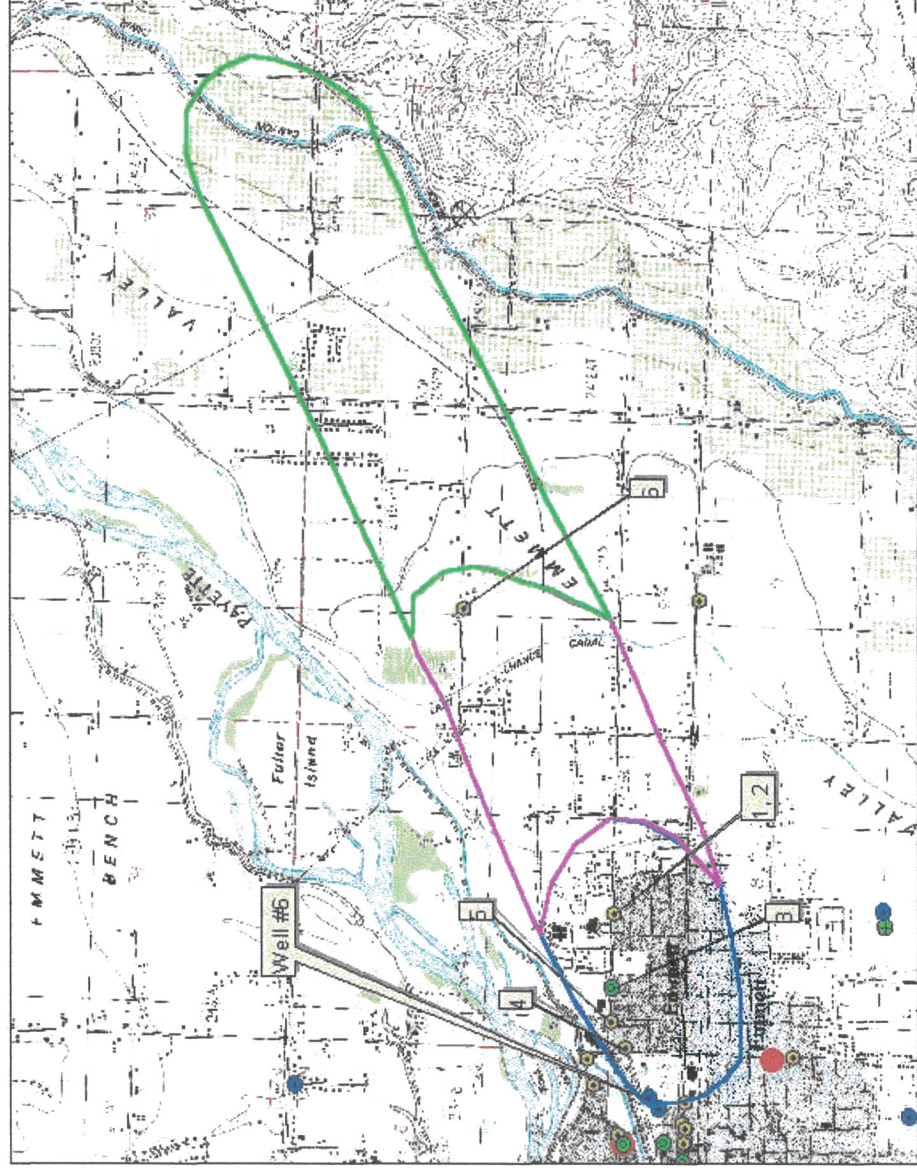
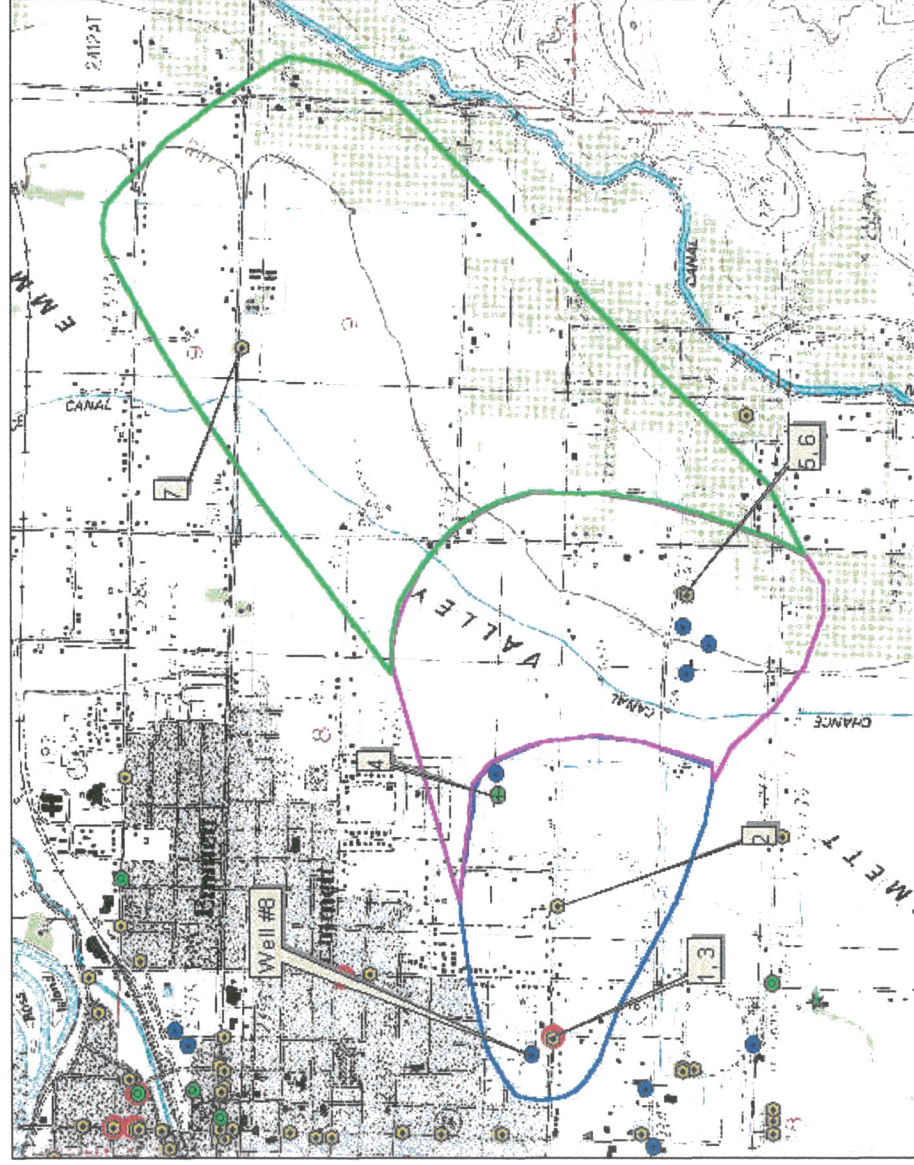


Figure 4. City of Emmett Well #8 Delineation and Potential Contaminant Locations

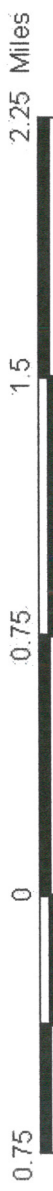
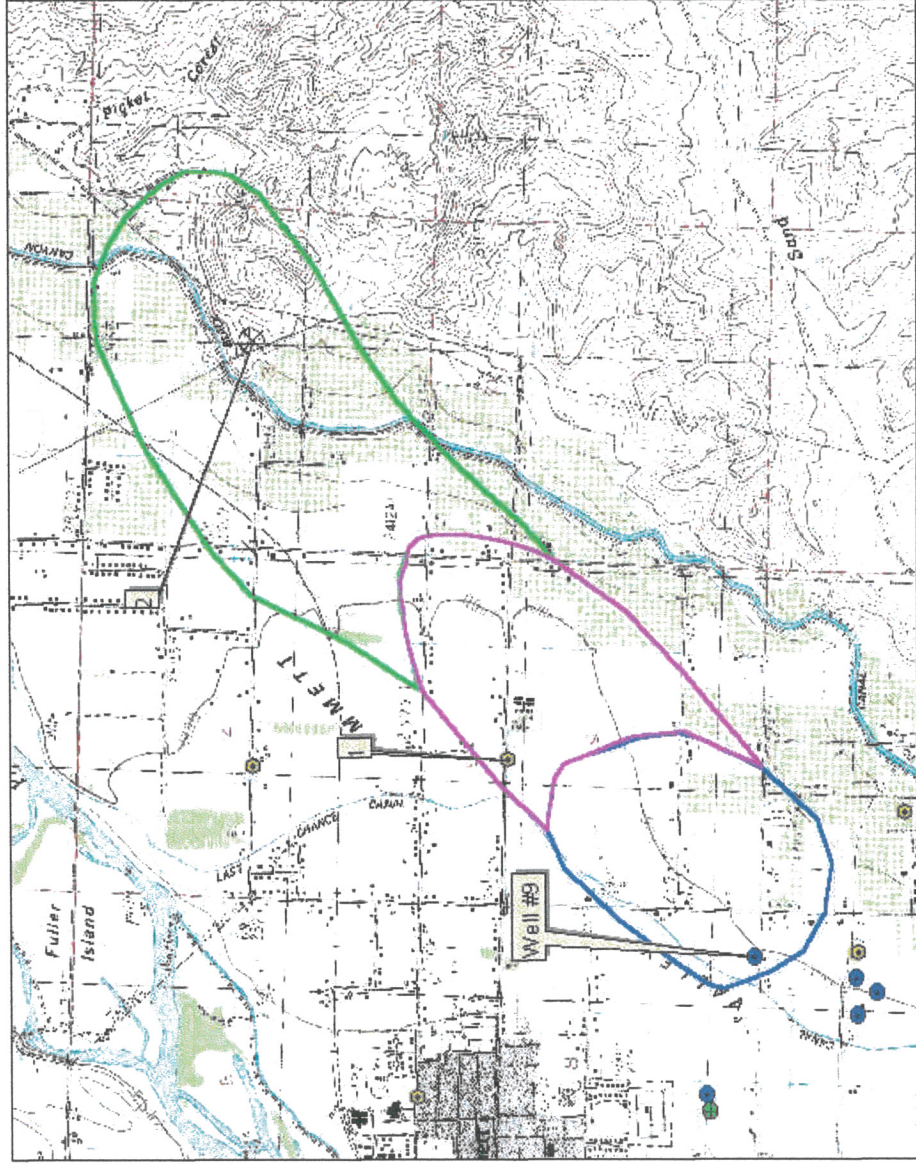


Legend (see glossary)

Well Capture Zones	Business Mailing Lot	Recharge Point
Zone 1B (3-yr TOT)	Daily	SARA Title III Site (EPCRA)
Zone 2 (6-yr TOT)	LUST Site	Injection Well
Zone 3 (10-yr TOT)	UST Site	Group 1 Site
Wellhead	Closed	Cyanide Site
Enhanced Inventory	Open	Landfill
Toxic Release Inventory	NPDES Site	Wastewater Land App Site
CERCLIS Site	Mine	
RCRAIS Site	AST	

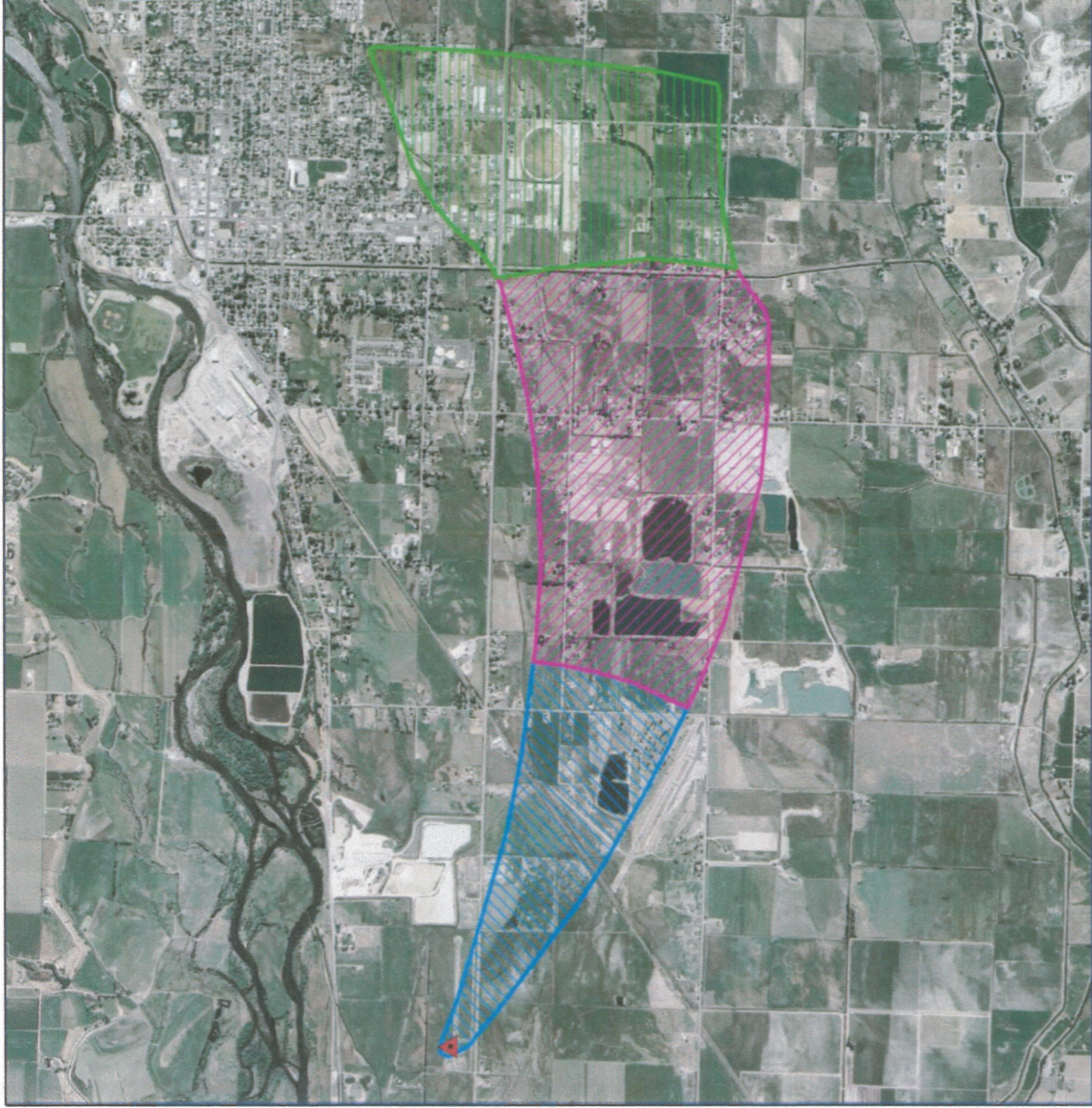


Figure 5. City of Emmett Well #9 Delineation and Potential Contaminant Locations



Legend (see glossary)

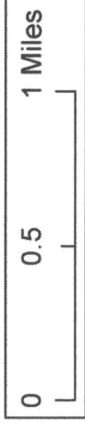
Well Capture Zones	Recharge Point
Zone 1 (0-yr TOT)	SARA Title III Site (EPCRA)
Zone 2 (5-yr TOT)	Injection Well
Zone 3 (10-yr TOT)	Group 1 Site
Wellhead	Cyanide Site
Enhanced Inventory	Landfill
Toxic Release Inventory	Wastewater Land App Site
CERCLIS Site	
RCRAIS Site	
Business Mailing List	
Daily	
LUST Site	
UST Site	
Closed	
Open	
NPDES Site	
Mine	
AST	

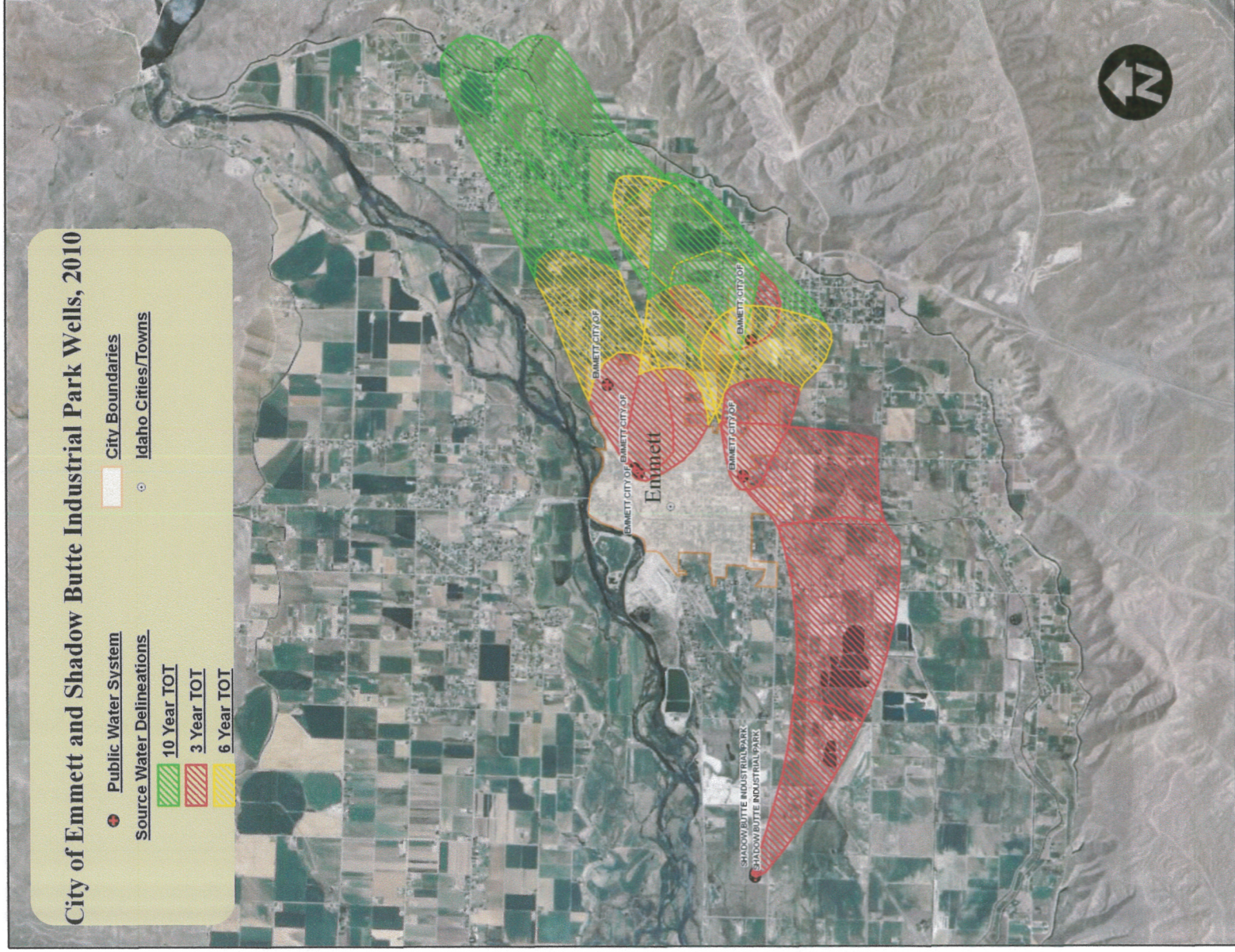


Legend

Shadow Butte TOT Zones

-  0-3 Year
-  3-6 Year
-  6-10 Year





City of Emmett and Shadow Butte Industrial Park Wells, 2010

- + Public Water System
- City Boundaries
- Idaho Cities/Towns
- Domestic Wells (IDWR)
- 10 Year TOI
- 3 Year TOI
- 6 Year TOI

